

Fossil Mammals

Alphabetical

Mullingula . Aceratherium occidentale

~~A. O.~~ Rhinoceros occidentalis. Sudy. Pr. Amr
v. 1850. 119. — Ib. v. 1851. 276. — Owen rep. 552.
Am. Fauna. 86

Rummanalia.

Agrochaerus antiquus

A. A. Seely, Proc. Am. Mus. Nat. Hist., v. 1850, p. 121. - Owen rep. 571
Ann. Linn. 24

Remnant.

Agrochoerus

major. L

A. major Seely. Pr. Mus VIII Sept. 1856. 164

Mant. Seely

Sorex cinereus, Bach. J. A. N. Sci. Th. VIII. 1837, 373, Pl. xxiii, f. 3.

not quoted in Aud. & Bach. = young *S. carolinensis* III. 344

" *palustris* (Reich) Ib. 396.

" *talpoides* (Gaffey) " 397 = *S. carolinensis*? III. 344

Lepus longicaudatus (Gray) Bach. J. A. N. Sci. Th. VIII. 1837, 83 = African species ^{Walcher} ~~Cap. 1st ed. 1844~~ III. 344

" *nigricaudatus* (Bennett), " " 84 = *S. mexicanus*? III. 344

Vespertilis monticola, Aud. & Bach. J. A. N. Sci. Th. VIII. 2. 1842, 280, Gray Sulphur Sp. Pa.

" *argyrenus* " " 282 "

" *leucis* " " 284 Erie Co. Mich.

" *californicus* " " 285 Cal.

Scalops argentatus " " 292 = Mich.

Amia fulva " " 295 Illinois

" *scalopsoides* " " 299 Long Island

Sciurus occidentalis " " 317 Cal.?

Delphinidae

Orycterocetus

quadratidens

O. q. - Leidy. Pr. A. N. S. VI. Aug. 1853. 378. Miscene of Pa.
Orycterocetus cornutidens - Leidy. Pr. Ann. VIII.
Oct. 1856. 255. Miscene of N. C. (why change
name)

Cryclotherium missouriense

Harl. Am. Jour. Sc. 44. 1843. 69

Benton Co. Mo

Palaeochorus

probus

P. p. Leidy. Pr. Ann. VIII. Sept. 56. 165. Maus. Lem.

Rodents

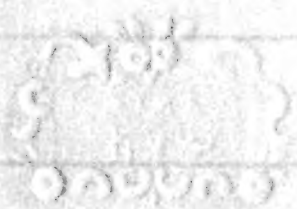
Palaeolagus [†] haydeni

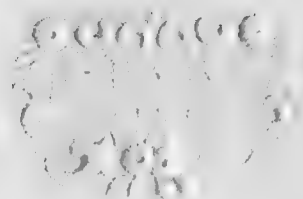
+ P. h. Leidy: Pr. Acad. Philad. VIII. Ap. 1856. 89.
Mauvaises Jones

Phoca

debilis

P. d. Leidy, Pr. Ann. VIII. Nov. 1856. 265
Fossil, Ashley Riv. Sic





Manatus americanus

Manatus americanus, De Kay, Zool. N.Y. T. 1842. 123. (Florida)

Phoca

Wymannii

P. W. Leidy. Proc. Acad. Nat. Sci. Phila. 1856. 265.

Fossil. of Virginia

Cricetus myoides

Cricetus myoides, Gafferi. Zool. Jour. v. June. 1830. 204

pl. X. Late Somere.

Physeter

Antiquus

P. a. Leidy, Pr. A. N. S. VI, Aug. 1853. 378. Ashley River

Ruminantia.

Poebrotherium

wilsoni

P. W. Leidy, Proc. Acad. Nat. Sci. Phila. 1847. 332 -

Ib. Owen

Rep. 571 - Amer. Journ. Feb. 19

~~H. S. Leidy, Proc. Acad. Nat. Sci. Phila. 1847. 332 -~~
~~Ib. Owen~~

Species

Hypodora
x

Schaeffer

Celace

Pontogeneus priscus

Sedy. Pr. Am. VI. Mar. 1852. 52
Issued Wash. D. C.

Priscodelphinus grandaeus

P.g. Leidy, Pr. A. N. Sc. 1857. 326

Priscodelphinus

harlandi

P. h. Leidy. Proc. A. N. S. 1851. 826. Greensand Nid

Remnantia

Protomenys

halli.

P. h. Ledy. Pr. Mus. VIII. Sept. 1856. 164

Saurceetus gibbesii

Agas. Pr. Austr. Feb. 1848. 4.

Island. S. C.

Rodentia

Stenopteryx nebrascensis

+ S. n. - Ledy. Pr. Ans VIII. April 1856. 89.
Mauvaises Terres. N. B.

Sternorhynchus

vetus

S. W. Ledy, Pr. A. N. Sc. vi. Aug. 1853. Cretaceous N. J.

Multungula

Titanotherium^x

proutii.

Palaeotherium proutii

Mamm. Series

Rhinoceros americanus

Palaeotherium giganteum. Ledy. Am. Journ. 78

Eotherium americanum. Ib. Pr. Am. 4. Aug. 1853. 392

+ Titanotherium[†] proutii. Ledy Pr. Am. VIII. Ap. 1856. 92.

Trichechus virginianus
Fossil.

Trichechus virginianus. DeKay. Ann. N.Y. Geol. T. 271 Accom. G. Co.
.. Zool. N.Y. T. 1842. 56. Pl. xix, f. ab.

Ursus

amplidens.

U. a. Leidy. Pr. A. N. Sc. VI. Feb. 1853. 303. Fossil,
Natchez

Carnivora

Amphicyon gracilis

+ A. G. Sedy. Pr. Ans. VIII. April 1856. 90

Mauveuses Femmes

Solidungula

Anchitherium

bandii

A. b. Sedy, Owen Rep. 1852 572. Amer Journ. Feb. 187
Palaeotherium b. Sedy. Pr. Am. 1850. 15 121
Hippodon speciosus. Sedy. Pr. Am. VII. 1854. 90

H. h. Sedy. Pr. A. Misc. VI. Aug. 1853. 392. *Mammalia*

hirsutus

Hippodon

Bear lip

Arctodus

puscus

A. p. Leidy, PAMS. VII. June 1854. 90. · Arkley River

Balaena palaeoatlantica

rossica.

Sedy. Pr. Mus. ~~V~~^X. 1857. 308.

Miocene. Westmorland Co. Va.

Celauro

Basilosaurus serratus

Gibber. Jan². 1. 1847. 14.

Fossil S.C.

Camelops Kansanus

Camelops^x Kansanus. Ledy, Proc. Am. Soc. VII. 172. Kansas.

Delphacidae

Colophonodon

holmesii

C. L. Leidy, Pr. A. N. S. VI, Aug. 1853, 377, Ashley River
Ipswich

Deinictes

Deinictes Leidy Proc. Acad. Nat. Sci. Phila. 1856. 91.
Type *D. felina*.

Musculidae?

Sanctis^x

felina.

→ D. f. Leedy. Pr. Ann. VIII. July 1854. 127. Newbury
1b VIII. Apr. 1856. 91. Jones

Delphinus calvertensis

Harlan - Bull. Nat. Inst. II. 1842. 195. Plates
Fossil. Maryland

Delphinus

conradi

Miocene of Virginia

Delphinus conradi, *Ledy, Pr. A. N. S. VI. Feb. 52. 35*

Delphinus intermedius

Carl. Jans. VI. 1827. 57. Plate. England

Selphinus

vermoulanus

Thompson, Am. Jour. Sc.² IX. 1850. 256,

Tertiary of L. Champlain

~~Euclyptus~~
~~Platygonus~~

compressus. See

Platygonus compressus

P. p. Leconte. Am. Jour. Sci. 2^d Ser. v. 1848, 103 - Trans. Am. ac.

arts. N. Ser. III, 1. - Pr. A. N. Sc. vi. (April 1852,) 57

~~Plat. Hysp. depressifrons~~

~~Protochaerus pumilus~~

~~Dreotylus depressifrons~~

" castatus

~~Eichoerus macrops?~~

Dreotylus compressus - Sedy Trans. Am. Phil. Soc
XI. 1857.

Dicotyles castatus, Lee

Benton Co. Mo. Jan 1852

Dicotyles castatus, Lee. Proc. A. N. S. C. Jan. 1852. v. 1, 5.

Dicotyles

depressifrons

Illinoi.

Dicotyles depressifrons. See Proc. A. N. S. vi. 1852. Jan. 3

Hypops depressifrons. See Am. Jour. Sc. 2^d Ser. V. 1848. 103

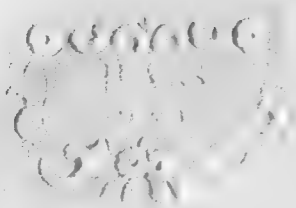
Celaena

~~J.~~
Dorudon

Serratus

Gibbes. Pr. Aus. II. 1845. 254

Fossil S. C.



Elephas americanus

Elephas americanus, De Kay Zool. N.Y. T. 101. Pl. xxxii. f. 2.

Luzon L. *Rehuter*, N.Y.

Entelodon

~~Am~~ *vigors*

E. i. Leidy. Pr. Am. VIII. Sept. 1856. 164

Mans. Jones

Multungula Entelodon Morloni

Archaeotherium Morloni, Ludy Pr. Am. v. 1850. 92

Arctodon Ludy. Pr. Am. v. 1857

Archaeotherium robustum Ludy. Amer. rep.

Amer. Science

E. A. Steidley, Pr. A. N. S. v. 11. Aug. 1853. 392. ^{Am. Science}

Amniscemus

Zethidium

Phonoceras

Equus

curvidens

americanus *notley*

Ledy Pr. Ans. III. Sept. 1847. 262, 265

Fossil U.S.

Eucheria^x Macrosp

Judy. Trans. Am. Phil. Soc. x. 1853. 342

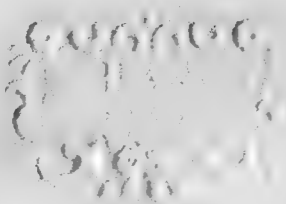
Josnel. Rey

Rod.

Cumy [†]

~~gracilis~~
elegans

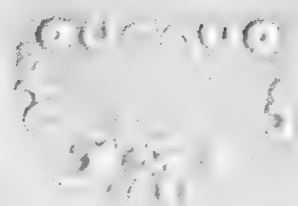
E.g. Ledy. Pr. Ans. VIII. April 1856. 90
Mauvaises Jones.



Hipparion occidentale

H. O. Leidy, Pr. Am. VIII. Feb. 18 56. 59. Mauvais Series

Hipparion affodan speciosum



W. S. Leidy. Pr. Ans. VIII. Dec. 56. 311. Bijoux Hill,

Hipparion

venustum

H. v. Leidy. Pr. AMSc. VI. (Feb. 1853) 241. Ashley River. S. C.
Fossil.

Carnivora

Ryaenodon

cucullatus

H. C. Leidy, P. A. M., 41, Aug. 1853, 393. Manus. For

Carnivora

Hyænodon

cruentus

H. C. Ledy. Pr. Am. VI. Aug. 1853. 393. Mans. Jan

Cameroon.

Nyaenodon horridus

H. K. Ledy. Proc. Amer. Mus. Nat. Hist. Aug. 1853. 392. New York
Junc.

Hydrochoerus Cromp^x

esopi

Cromp

W. e. Leidy, Pr. A. N. S. VI. Feb. 1852. 241, Ashley R

Hydrochoerus esopi. Leidy. Pr. A. N. S. VII. Sept. 56
165

Hypops depressifrons
~~*Protochaeris*~~ *prismaticus*

Hinton

Hypops depressifrons, See. Am. Jour. Sc. 2^d Ser. V. 1848. 103 - Pr. A. N. S.
^{11. April 1852. 57.}
Protochaeris prismaticus, See. Am. Jour. Sc. 2^d Ser. V. 1848. 103

1b. Pr. A. N. S. VI. Jan. 1852. 5.



Hypopotamus americanus

H. a.

Lidy Pr. Ann. VIII. Feb. 1856. 59.

Manuauu Jenu

Hyracodon

Hyracodon. Ledy, Pr. Acad. VIII. Ap. 1856. 91.

Type *H. nebrascenses*

(*Aceratherium nebrascenses*)

Hyracodon nebrascensis

Rhinoceros nebrascensis Ledy, Pr. Ans. V. 121; VII. 157,
S. C. Am. June 86

Aceratherium nebrascense. Pr. Ans. V. 33,

Hyracodon n. Ib. Pr. Ans. VIII. Apr. 1856. 92.
Mauvaises Jones

Rodentia

Ischyromys | typus

+ J. A. Leidy. Proc. Acad. Nat. Sci. Phila. Apr. 1856. 89.
Mauvaises Terres

Cetacea herbwood

Ischyrotherium[†] *antiquus*

† J. a. Sedy. Pr. Ans. VIII. April 1856. 89.

Mauvaises Terres

Leptocentrus

primus

L. p. Seidy, Pr. Anus. VIII. Dec. 56. 311. ^{Bryoux}
_{Wells}

Ruminantia

Leptauchena

decora

* L. d. Leidy, Proc. Acad. Nat. Sci. Phila. April 1856. 88 - 16. Sept. 1856. 163.
Mauvaises terres

Pachydermato

Leptochærus[†]

· Spectabilis

+ L. S. Seely. Pr. Ann. VIII. April 1856. 88

Mauraves Jones

Leptomeryx

evansii.

L. e. Ledy; Pr. A. N. Sc. VI, Aug. 1853, 394. ^{Maurice}
near Moschus ^{Done}

Carnivora.

Macharodus

primaevis

M. p. Leidy, Proc. Acad. Nat. Sci. Phila. 1857. 329. - Owen, Rep. 1852. 564.
- Am. J. Sci. 1853. 95

Fossil
Macrophoca

atlantica

M. A. Leidy. Proc. Am. Mus. Nat. Hist. Vol. VIII. Oct. 1856. 220.
New Jersey. Miocene

Manatus

Antiquus

M. a. Leidy. Pr. Ans. VIII Sept. 56. 165. New
Jersey Va

Megalomys

Structure of feet in Leidy Trans. Am. Phil
Soc. XI, 1857.

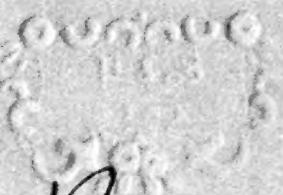
Equine

Merychippus

irregner

M. i. Leidy. Pr. Am. VIII. Dec. 1856. 311

Bygone hills



Ruminantia

Merycodon

reatus.

M. n. Seely, Pr. ANS. VII, June 1884. 90. *Mauvass* *Seely*
 Merycodus n. " " Aug. " 157

Ruminantia . . .

~~Oreos~~

Oreodon

Culbertsonii

Memo. Serus

O. culb. Lidy Pr. Am. Mus. Owen Rep. 1848. - Am. Journ. 45

Merycododon C. Lidy. Pr. Am. Mus. 1848. 47.

Oreodon priscus. Lidy. Pr. Am. Mus. 1851. 238

Colylops speciosa. " " 239

Oreodon major. " Am. Journ. 55

Merycododon major " "

H.C. Pr. A.M.S. VI. Aug. 1853. 393. Merycodon Denis

eventus

Hyaxodon

Ruminantia

Creodon

gracilis.

C. g. Ludy. Pr. Am. V. 1850. 239 - Owen rep. 550
Mericododon gracilis. Owen. rep. 550

~~W. C. Ludy. Pr. A. M. S. VI. Aug. 1853. 293. Mammals
of Texas~~

evians

Hyamodon

Oreodon

major

O. m. Leidy, Pr. AMS. VIII. Sept. 1856. 164